

## DPCD-3 Professional & Washer-desinfector loggers

**INTERSTER** 

...a member of the **VP**-group.de  
Interster International  
Samsonweg 2a  
1521 RC Wormerveer  
The Netherlands  
Tel.: +31 (0)75-6402606  
Fax: +31 (0)75-6400244  
E-mail: [info@interster.nl](mailto:info@interster.nl)  
Website: [www.interster.nl](http://www.interster.nl)

02/2010

**INTERSTER**   
...a member of the **VP**-group.de

[www.interster.nl](http://www.interster.nl)



## DPCD-3 Professional

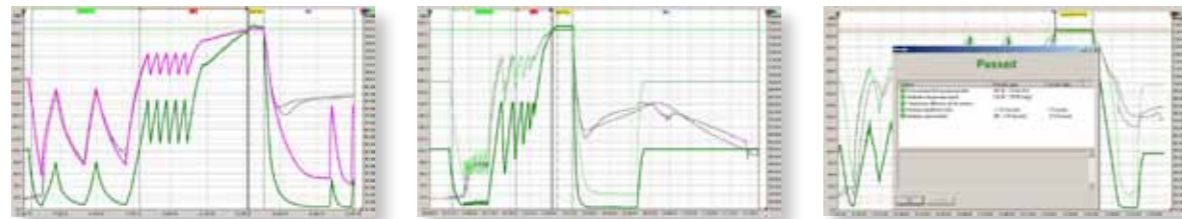
The Digital Process Challenge Device (DPCD) is a useful device for the daily verification of the steam sterilization process. Interster is continuously working on improving the device.

### The new Interster DPCD-3 Professional:

- is based on and mentioned in various norms and guidelines.
- measures the physical parameters in the Helix and in the sterilization-chamber of the autoclave accurately during the entire process by means of electronic sensors, an electronic pressure sensor and time registration.
- is a unique device with very user friendly software. The device gives the user an insight into the actual course of the process for the load in the autoclave.
- provides a clear judgement of the sterilization process. The results are reproducible always and are verified according to standards as described in EN 285 2006+A2:2009, EN-ISO 11140-4:2007, EN 867-5:2001, EN-ISO 17665-1:2006 and EN 13060+A1:2009.
- is an independent system which shows results by means of giving a PASSED or NOT PASSED signal and provides extensive information about the criteria for judgement.
- supplies software which enables to archive all performed processes.
- verifies all results in relation to every standardised steam sterilization process.

The software of the DPCD device is very user friendly. After ending the sterilization process, it is not necessary to wait for the device to cool down. Data can be collected immediately by pressing the starting button. The software of the device will archive all performed processes so judgement of the data can be done at any time. All data of the processes can also be printed for archiving together with parametric release information in order to complete the quality system.

Because of its size, the DPCD can be placed in almost every autoclave.



The graph shows the temperature in the chamber, in the helix and the theoretical temperature. Beside that, the pressure is shown.

### Technical data:

|                              |                                  |
|------------------------------|----------------------------------|
| Helix.....                   | Complies with EN 867-5:2001      |
| Temp. sensor.....            | Pt 1000 (2x)                     |
| Temp. accuracy.....          | 0.1°C                            |
| Work temp. and range.....    | 0°C - 150°C                      |
| Storage temperature.....     | 0°C - 60°C                       |
| Pressure accuracy.....       | 1,5mbar                          |
| Pressure range.....          | 0 – 3500mbar                     |
| Display.....                 | 0.1°C                            |
| Endurance.....               | 500 cycli                        |
| Communication protocol.....  | GIMP protocol                    |
| Measuring capacity.....      | 6960 measuring values per cycle  |
| Battery.....                 | Lithium 3.6 V (self replaceable) |
| Registration.....            | max. 2 hours                     |
| Housing.....                 | Peek                             |
| Housing of the logger.....   | Stainless Steel                  |
| Size.....                    | Ø 9 x 11 cm                      |
| Weight.....                  | 520 grams                        |
| Calibration Certificate..... | conform ISO 10012:2000           |

### Article

|          |
|----------|
| 33001100 |
| 33001102 |
| 33001103 |
| 33001105 |

### Description

|                       |
|-----------------------|
| DPCD and software     |
| Interface and adapter |
| USB cable             |
| DPCD set 1 incl. case |
| 1 x 33001100          |
| 1 x 33001102          |
| 1 x 33001103          |
| DPCD set 2 incl. case |
| 2 x 33001100          |
| 1 x 33001102          |
| 1 x 33001103          |

33001110

## Washer-desinfector loggers

The Interster WAD 1 Temperature Wireless and WAD 5 Pressure-Temperature Data Loggers are useful devices for the daily verification of the wash and disinfectant process. With these loggers the wash and disinfection process can be monitored and potential flows in the process can be recognized on time. Furthermore the wireless loggers are compatible with the Interster interface DPCD-3 Professional software and there new innovative WAD 1 and WAD 5 logger makes it possible to monitor your routine control on real-time. The Interster WAD 1 and WAD 5 are in according to the EN-ISO 15883.

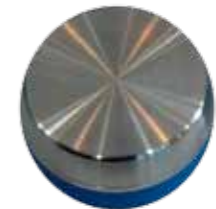
### Technical data of WAD 5 logger art. no. 33000100

|                          |  |
|--------------------------|--|
| Type                     | WAD 5 Luerlock   |
| Measuring range temp.    | 0°C...+150°C (32°F... 302°F)   |
| Measuring range pressure | 1 mbar...4.000 mbar  |
| Accuracy                 | ± 0.2°C (-40°C...0°C)/ ± 0.4°F (-40°F...32°F)<br>± 0.1°C (0°C...+140°C)/ ± 0.2°F (32°F...284°F)<br>± 0.2°C (+140°C...+150°C)/ ± 0.4°F (284°F...302°F)<br>± 10 mbar |
| Resolution               | Temperature: 0.025°C (0.045°F)<br>Pressure: 1 mbar   |
| Measuring rate           | Adjustable: 250 ms, 500 ms, 1 s ... 24h  |
| Memory                   | 100,000 measured values  |
| Operating temperature    | 0°C...+150°C (32°F... 302°F)   |
| Operating pressure       | Up to 7 bar  |
| Sensor                   | 1 Temperature (Pt 1000), ext., axial Ø 3 mm/L = 40 mm<br>1 Pressure (piezo-resistive pressure sensor - temperature compensated)                                    |
| Measuring mode           | • Endless • Measure upon start temperature<br>• Measure upon start time • Start/stop time<br>• Start immediately until end of memory                               |
| Communication            | Wireless 2.4 GHz/IEEE 802.15.4   |
| Eyelet                   | Optional, provided with every type of EBI 10   |
| Battery                  | By user exchangeable   |
| Size/ weight             | Ø 46 mm x 24 mm*/approx. 70g*  |
| Housing material         | Stainless steel (V4A)/PEEK   |
| Protection class         | IP 68/NEMA 6   |



### Technical data of WAD 1 logger art. no. 33000110

|                          |  |
|--------------------------|--|
| Type                     | WAD 1  |
| Measuring range temp.    | -85°C...+400°C (-121°F... 752°F)   |
| Measuring range pressure | 1 mbar...4.000 mbar  |
| Accuracy                 | ± 0.5°C (-85°C...-40°C)/ ± 0.9°F (-121°F...-40°F)<br>± 0.2°C (-40°C...0°C)/ ± 0.4°F (-40°F...32°F)<br>± 0.1°C (0°C...+140°C)/ ± 0.2°F (32°F...284°F)<br>± 0.2°C (+140°C...+250°C)/ ± 0.4°F (284°F...482°F)<br>± 0.5°C (+250°C...+400°C)/ ± 0.9°F (482°F...752°F) |
| Resolution               | Temperature: 0.025°C (0.045°F)   |
| Measuring rate           | Adjustable: 250 ms, 500 ms, 1 s ... 24h  |
| Memory                   | 100,000 measured values  |
| Operating temperature    | -85°C...+150°C (-121°F... 284°F)   |
| Operating pressure       | Up to 20 bar   |
| Sensor                   | 1 Temperature (Pt 1000), intern  |
| Measuring mode           | • Endless • Measure upon start temperature<br>• Measure upon start time • Start/stop time<br>• Start immediately until end of memory   |
| Communication            | Wireless 2.4 GHz/IEEE 802.15.4   |
| Eyelet                   | Optional, provided with every type of EBI 10   |
| Battery                  | By user exchangeable   |
| Size/ weight             | Ø 46 mm x 24 mm*/approx. 70g*  |
| Housing material         | Stainless steel (V4A)/PEEK   |
| Protection class         | IP 68/NEMA 6   |



Art. No.:  
33000100  
33000110

Quantity:  
1 piece  
1 piece